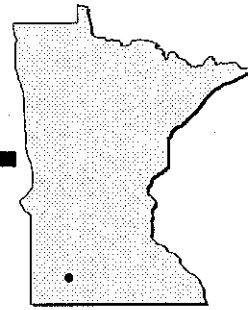


Windom - MWM
www.windom-mn.com



Airport Manager: Brian Underwood - 507-830-0273
horsepoor_ridefast@hotmail.com

Contact Person: Brian Underwood - 507-830-0273
horsepoor_ridefast@hotmail.com

AWOS/ASOS: 507-831-1833 - VHF 118.525

MnWAS Loc/Hrs: Arrival/Departure Building - 24 hours

Attended: Unattended

Fuel: 100LL - available 24 hours with credit card

After Hrs Service: 507-830-0273

FBO(s): None

Businesses: Aero Spray Service, Inc. - 605-853-2777

Ground Transport: Car available

Food Service: Pop machine

Dining: Jack Slades - 507-831-2280 - 2½ miles
Godfather's Pizza - 507-831-4836 - 3 miles
Hardees - 507-831-3429 - 3 miles
China Restaurant - 507-831-5998 - 2½ miles
Happy Chef - 507-831-1573 - 3 miles
McDonald's - 507-831-5303 - 3 miles

Lodging: Windom Family Inn - 507-831-3111 - 2½ miles
Super 8 Motel - 507-831-1120 - 3 miles
Guardian Inn - 507-831-1809 - 2½ miles

Airport Events: Fly-In Breakfast weekend prior to Labor Day weekend

Underwing Camp: Yes

Campgrounds: Kilen Woods State Park - 507-662-6258 - 11 miles
City Park - 4 miles
County Park - Talcot Lake - 17 miles

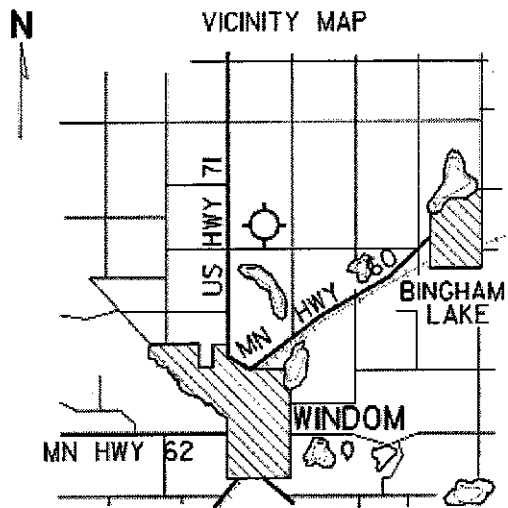
Local Attractions: Windom Golf Course - gas carts for rent - Holes: 9
Cottonwood Lake - 4 miles - swimming, fishing
Riverfest - second weekend in June
Flea Market - first weekend in November

Comments: None

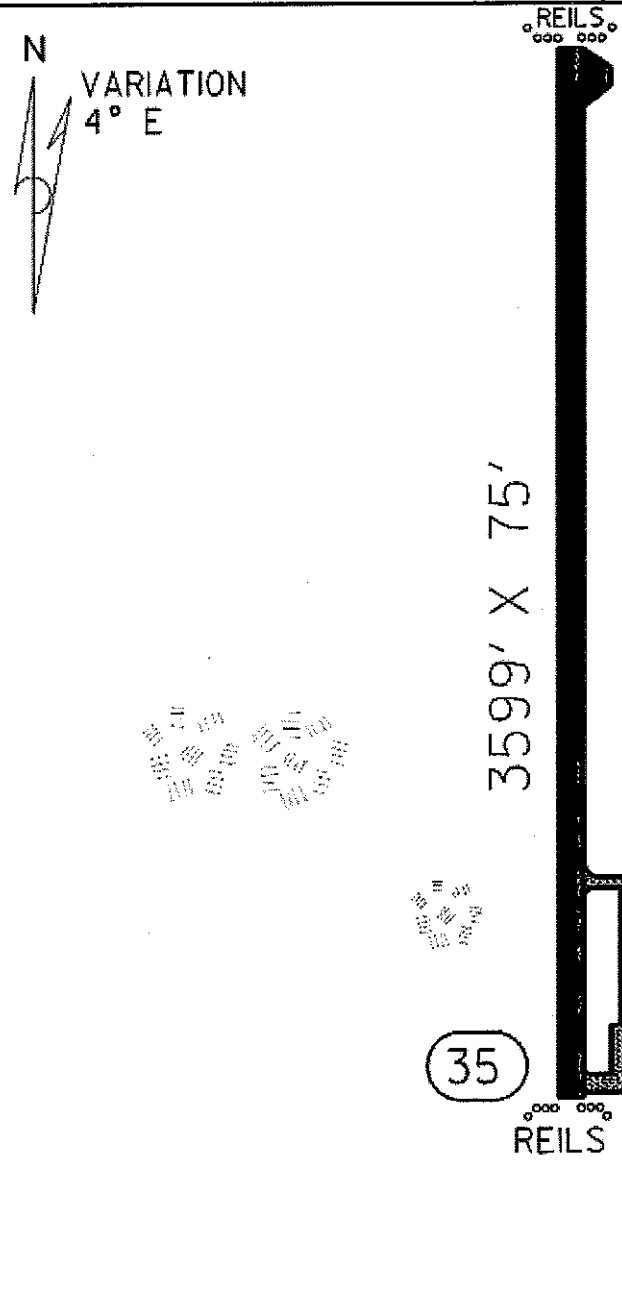
FIELD ELEV. 1410'

(MWM)

WINDOM



SEC. CH: OMAHA NORTH
 LAT: 43° 54.8'
 LONG: 95° 06.6'
 COMM:
 CTAF: 122.9 (L)
 AWOS: 118.525 VHF
 MPLS CTR: 127.1
 NDB: (MWM) 203
 TPA: 2210' (800')
 APPROACH: NDB, RNAV, GPS



17

RUNWAY 17 - 35			
	CLICKS ON 122.9		
	3	5	7
LIGHTS	LOW	MED	HIGH
REIL	OFF	OFF	ON

WINDOM MUNICIPAL AIRPORT

WINDOM